



South Farnborough Junior School

Parent/Carer Information Book for New Year 3 Pupils

Embracing our values today, to be a successful part of the world tomorrow

Our Vision



We know that children need to feel happy and confident in order to learn successfully. As a school, we aim to deliver a high-quality education that provides children with the skills they will need to live happy and fulfilling lives, whilst at the same time meeting their physical, emotional, social, moral, cultural and spiritual needs.

Our school values, chosen by the children, are Happiness, Pride, Creativity, Resilience, Empathy and Excellence and the children work hard to live by them, valuing themselves, other children and adults and their achievements as well as their environment. The ethos of the school is very much one of mutual respect.

Welcome to South Farnborough Junior School

I would like welcome all our new families to South Farnborough Junior School and hope that it will be a long and enjoyable association. The purpose of this pack is to provide you with general information regarding some of the school's procedures that you need to know once your child starts our school. Please do not hesitate to contact me at any time throughout your time with us; my door is always open!

Mrs Jenny Byrne,
Headteacher



Designated Safeguarding Team



Mrs Byrne
Headteacher



Mrs Hudson
Acting Deputy
Head & SENDCo



Mrs Nelson
School
Improvement
Lead



Mrs Allen
Year 6 Teacher



Mrs Plummer
Business
Manager

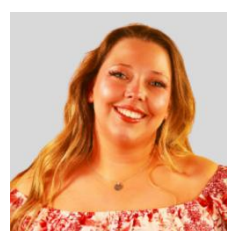
Year 3 Class Teachers 26/27



Mr Lines
3X Class Teacher



Miss Turner
3Y Class Teacher



Miss Knight
3Z Class Teacher

Key Information



The School Day

- Gates open at 8:30am & close at 8:50am all children should be in school by this time.
- Morning registration is at 8:55 am. Please make every effort to ensure your child is in school by 8:50am so they are in class ready for registration. If you arrive after 8:50am, please report to reception
- Morning play is from 10:45am to 11am.
- Lunchtime is from 12:00pm to 1pm (Yrs 3 and 4) and 12:30pm to 1:30pm (Yrs 5 & 6)
- The school finishes at 3:25pm. Please collect your child promptly at the end of the school day.

Term Dates 2026/2027

- Autumn Term – 1st September 2026 to 18th December 2026
 - Half Term – 26th October 2026 to 30th October 2026
- Spring Term – 4th January 2027 to 25th March 2027
 - Half Term – 15th February 2027 to 19th February 2027
- Summer Term – 12th April 2027 to 21st July 2027
 - Half Term – 31st May 2027 to 4th June 2027

Inset Days 2026/2027

- Tuesday 1st September 2026
- Monday 4th January 2027
- Monday 19th July 2027
- Tuesday 20th July 2027
- Wednesday 21st July 2027

Procedures for Dropping Off and Collecting Your child

As most of our children live within the immediate vicinity of the school, we strongly encourage all members of our school community to walk, cycle or scoot for all or part of the journey to school. To support this we provide:

- Cycle training (Bikeability in Year 6)
- Cycle and Scooter Racks
- Park and stride map
- WOW – year-round walk to school challenge earning WOW badges

For further details on travelling to our school please [click here](#)



There is no parking for parents/carers on site. Our designated car park is at King George V park with a path that leads to the rear school gate (on to the upper school playground).

The school gates will be closed during the day for safeguarding reasons. If you need to collect or drop off your child during the day please contact the school where a member of staff can assist you. Entrance to the site during the day is via the main pedestrian gate on Cunnington Road.

Attendance and Absence

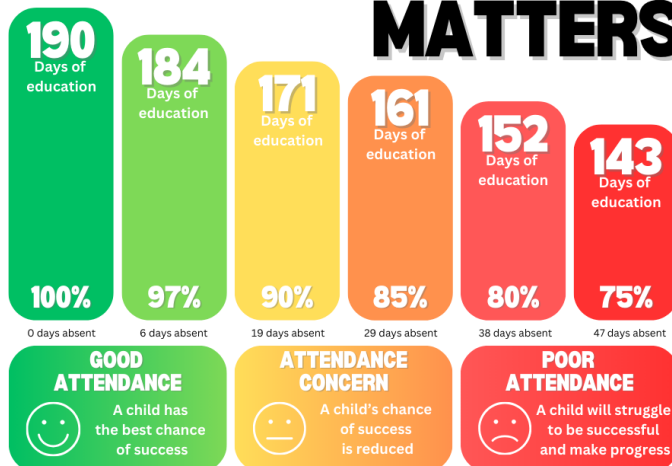
We are very proud of our school attendance rates and have high expectations of all of our children.

As a school we actively encourage excellent attendance and will look to support and challenge weaker attendance, this includes punctuality. Attendance is monitored regularly and contact made as soon as any concerns arise. Likewise, please contact the school sooner rather than later if you have any issues regarding attendance.

If your child is unwell, you are required to contact the office by 8:30am every day that your child is absent either by calling the school office or sending an in-app message via Arbor. Medical appointments (such as routine dental exams) should be made outside of school hours if possible.



ATTENDANCE MATTERS



Holidays

In keeping with Government policy, term time holidays will not be authorised unless circumstances meet certain criteria. Parents/Carers are required to complete a leave of absence form if you require them to take time away from school. As set down by the Department for Education, Penalty Notices can be issued for unauthorised absence. In Hampshire, Penalty Notices are issued when a pupil has had 10 or more half-day sessions (equivalent to five school days) of unauthorised absence, in the last 10 school week period. However, since an update in September 2025, pupils who have been absent for less than 10 unauthorised sessions, a penalty notice may still be available. Please see our [website](#) for more information.

Wraparound Care

We have wraparound care available on-site provided by CM-Sports. The breakfast club runs from 7:30am to 8:30am and the after-school club runs from 3:25pm until 6pm. Sessions are booked directly via the provider's website.

Food in School

Our school meals are provided by Chartwells on a rolling 3-week menu. Children can choose between a school dinner or a packed lunch from home when they come in during morning registration. Food does not need to be ordered in advance. Copies of our menus are available on the school website. It would be helpful to go through this with your child so that they know the choices that are available to them each day.

Paying for meals

From September meals will be priced at £3 per day. We operate a cashless payment system via Arbor. Payments should always be made in advance.

Free School Meals

As you are aware, children in KS1 are entitled to universal free school meals which will cease when they start with us in KS2. If you are in receipt of certain benefits or Universal Credit and believe you may still qualify for free school meals, you will need to apply prior to starting with us. Details of how to apply can be found on the Hampshire County Council website <https://www.hants.gov.uk/educationandlearning/freeschoolmeals/juniorsecondary>

Packed Lunches and Breaktime Snacks

Children may bring their own packed lunch and snacks from home which should be healthy and nutritious (no sweets, chocolate or fizzy drinks). During morning break, the children may have a snack which they bring from home or purchase one from the tuck shop. Tuck shop prices range from 20p-60p per item and includes items such as fruit juices, milk, milkshakes, bread, fruit, yogurt tubes, rice cakes etc. Please ensure that all packed lunch boxes and snack pots are named.

School Uniform and Equipment

It is our policy that all children wear school uniform. We have high standards in appearance and parents whose children join our school are expected to adhere to our uniform list. Parents/Carers of children not in the correct uniform will be contacted.

Uniform with the school logo can be purchased from Brenda's Schoolwear who are located at: 130 Frimley Road, Camberley, Surrey, GU15 2QN. Tel: 01276 469697 or visit their website www.brendas.co.uk. We also operate a second-hand uniform shop via our school office.

If you have any questions about what is acceptable, please contact the school before purchasing any items.

Uniform List

- Black Sweatshirt or Cardigan with school logo (from Brenda's or second-hand uniform shop)
- Yellow Polo Shirt with school logo (from Brenda's or second-hand uniform shop)
- Black trousers, skirt, pinafore dress. (*Skirts, dresses and shorts should all be knee-length. Trousers should be of a smart, tailored style i.e. not leggings*)
- Plain black school shoes or plain black trainers (e.g. no coloured logos/white soles etc.)

Examples of what is acceptable can be found on our uniform page, please [click here](#)

Jewellery, Makeup & Hairstyles

Children should not be wearing makeup or nail varnish to school. Children are permitted to wear a watch (no smart watches) and one stud per ear. These must be removed or earrings covered with micropore tape supplied from home for PE and games lessons. Short hair should be smart and tidy - **No tram lines or shaved designs please**. Long hair (i.e. that reaches the shoulders) should be tied back whilst at school, this is especially important for games lessons. Hair accessories should be small and discreet for school in black/yellow (No cats ears, large bows or hair wraps please). Only natural hair colours please

NO NUTS!

We have a strict NO NUT policy in school due to children in school with severe nut allergies causing anaphylaxis. No nuts or nut products (e.g. some cereal bars, peanut butter, Nutella/Kinder products etc) should be brought in for snacks or lunches please.



PE Kit

There are 4 houses in school represented by colours: Hawking (Blue), Attenborough (Green), Dench (Red) and Hamilton (Yellow). Your child has been allocated a house and will need to purchase a PE top in this colour from Brenda's schoolwear.

Children have PE twice a week and will need to come to school dressed in their kit on their designated days. These can be found on the Year 3 class page on our website from August.

- **PE KIT**

- House colour T-shirt with school logo (from Brenda's)
- Plain black shorts*/leggings (indoor or outdoor PE), Plain black joggers (outdoor PE)
- Suitable trainers for outdoor PE (no studded trainers)

**Shorts should be just above the knee*



Parents/Carers will be contacted if children are not in the correct kit.

Lost Property

Please help us to reduce the amount of lost property in school by ensuring that **all** your child's uniform and belongings are clearly named. Items are kept in lost property until the end of the term at which point any unclaimed items will be added to the second-hand uniform shop or recycled. If you wish to purchase stick-on name labels, you can visit www.stikins.co.uk and quote the **school code 18216** which will send a donation to school.

Other Equipment and Personal Possessions

Please can you ensure your child comes to school with a named water bottle **every day** which can be refilled from the water dispensers around school or classroom taps. The children are encouraged to bring their own small pencil case with essential items including: a blue handwriting pen (e.g. Berol handwriting or similar), pencil, pencil sharpener, eraser and ruler. They may also wish to include their own colouring pencils and glue stick. Their pencil case should be of a reasonable size to fit on their desk and in their trays (no oversized Smiggle type cases please). Please note: school will not be held responsible for any personal stationery items the children may wish to bring in. Mobile phones, toys and other personal possessions in school are discouraged

Year 3 Curriculum

We have an ambitious, broad curriculum, which is designed to ensure success for every single child no matter their background or needs. It ensures that every child has full access to the national curriculum and provides key threads throughout subjects to ensure all children can revisit and embed their learning.

Curriculum overviews can be found on the [Year 3 class page](#) so you can see what your child will be learning. More in-depth curriculum plans for each subject can be found on our website, please [click here](#)



Trips

The children will make visits to places of interest during their time with us to support the topic being explored in the classroom. Year 3 begin with a trip to Butser Ancient Farm when they start with us in September. They will also explore the local area and visit Farnborough library.

Home Learning

Homework is set on Google Classroom weekly and consists of: weekly spellings, reading at least 4 times a week, Times Tables Rockstars (TTRS) and occasionally a whole school homework. They will be shown how to use the platforms in class and how to log in from home when they start with us. An email will be sent out at the start of term with all their login details so you can help them access at home. If you are not able to access online learning please let us know.



All children will be guided to choose a school library book by the end of the first week until they have been formally assessed for their library colour code. We use the Boomreader app to record their reading outside of school.

Medication During the School Day.

If your child requires regular prescribed medication at school e.g. asthma pumps, adrenaline pens etc. please bring them to the school office on the first day along with a medication consent form completed separately for each type of medication they have. You can download a complete online medical consent form [here](#)

Parents/Carers need to ensure medication is in date and provided in the original container/box with the dispensing label from the pharmacy. Children's medication is stored in a medical box in their classroom which they have access to when required. In the event of PE lessons, school trips or sports events, your child's medication will be taken with them by the accompanying adult. If your child requires an Individual Health Care Plan (IHCP), we will send forms home for you to complete which will be kept with your child's medication and shared with the staff who they work with. We would be grateful if you could also provide copies of any medical plans provided by a healthcare professional if you have them e.g. asthma plan.

Extra-Curricular Activities

Every term, we organise a range of after-school clubs to extend the children's learning experience. Our school-led clubs finish at 4:15pm and usually run for 10 weeks each term. The charge per term for school-led clubs from next academic year will be £25. Examples of clubs that Year 3 children have taken part in this year are:

Arts & Crafts • Cross Country • Cooking • Athletics • Gardening • Tag Rugby • Board Games • Striking & Fielding • Dodgeball • Choir • Mindfulness • Film Club • Handball • German

We also have Hockey and Football clubs run by CM-Sports which need to be booked and paid for directly with them.

Communication

To help you manage your inbox, all non-urgent school communications (including letters, updates, and newsletters) are sent via email every Friday afternoon. Please ensure your contact details are kept up to date so you never miss an update. Please note that ad-hoc emails will still be sent throughout the week for time-sensitive updates or individual communications.

Parent consultation meetings are held in the Autumn and Spring Term. A written report is issued in the Summer Term and there is an opportunity for a further meeting if required.

If you wish to contact your child's teacher at any other time, you can either:

- in-app message via Arbor Parent Portal or App
- phone the school office on 01252 545682
- email the school office on adminoffice@southfarnborough-jun.hants.sch.uk where your message will be passed on to the relevant member of staff.

Please do not contact the teachers through your child's account.

Where to Find More Information

If you have not already had a look around our website, the Parent Information Portal is a good starting point to answer any questions you may have.

Each year group also has their own class page. A Year 2 to Year 3 page is available with information you will need ready for September.

Our web address is www.southfarnborough-jun.hants.sch.uk

School Contact Details

If you have any enquiries specifically regarding to the transition of your child to South Farnborough Junior School, please contact us via the following email address:

adminoffice@southfarnborough-jun.hants.sch.uk

A member of the Year 3 team will get back to you as soon as they can.

Phone:

01252 545682

Address:

South Farnborough Junior School
Cunnington Road, Farnborough, Hampshire, GU14 6PL

We also have Facebook page where you can follow us:



www.facebook.com/sfjschool



[Click here for Privacy Notice](#)